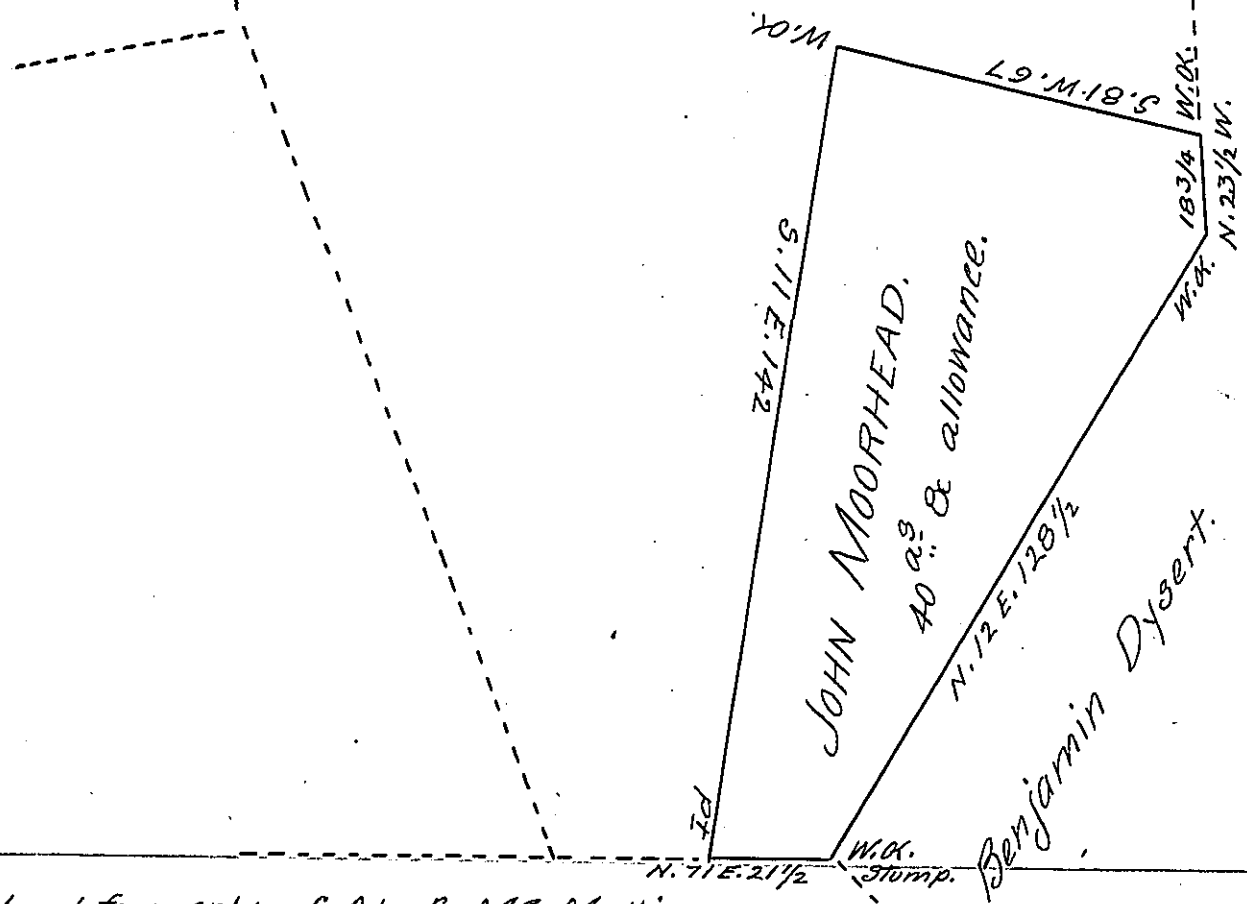


Remainder of the Larger tract.



Land formerly of Alex. M. Mullin.

A Draught of a Tract of Land Situate in Hopewell Township
 Cumberland County Containing 40^{a.} & allowance, It being part of a
 Larger tract of 192^{a.} 16 P. & allowance, Surveyed in pursuance of a
 warrant granted to John Moorhead dated the 21st Day of Nov-
 ember 1745. Surveyed & Struck off the Larger tract the 17th Day
 of November 1813.

Wm Wheeler D. S.

To Richard T. Leech Esq.

J. G.

IN TESTIMONY that the above is a copy of the original remaining on file in
 the Department of Internal Affairs of Pennsylvania, made
 conformably to an Act of Assembly approved the 16th day of
 February, 1833, I have hereunto set my Hand and caused
 the Seal of said Department to be affixed at Harrisburg,
 this fifteenth day of December 1905.

Geo. C. D. Brown
 Secretary of Internal Affairs.